

REF. **091-2031**

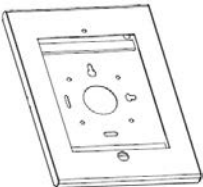
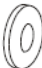

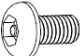
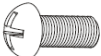


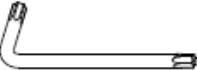

Contenitore antifurto per IPAD PRO 12.9"



## CARATTERISTICHE

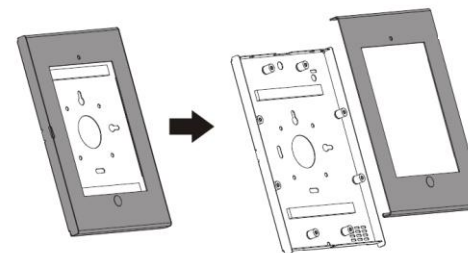
- Compatibilità Apple iPad Pro 12.9"
- Compatibilità VESA 75x75
- Chiusura antifurto TORX
- Passaggio cavi
- Materiale acciaio
- Dimensioni 373.5x260x18mm
- Peso 1.8kg

## CONTENUTO

- A  .....Contenitore iPad (x1)
- B  .....Rondelle (x4)
- C  .....Dadi M5 (x4)
- D  .....Viti TORX M5x8 (x2)
- E  .....Viti a croce M5x12 (x4)
- F  .....Viti ST4.8x30 (x4)
- G  .....Fisher (x4)
- H  .....Chiave TORX (x1)
- I  .....Bottone HOME (x1)

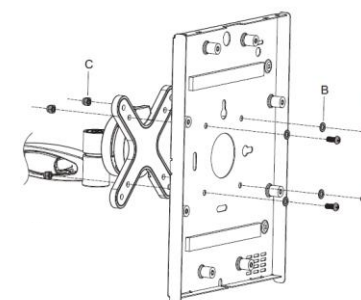
## INSTALLAZIONE

1

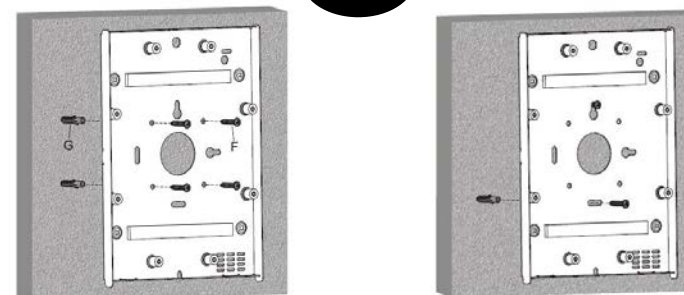


Rimuovere la parte superiore del contenitore

2

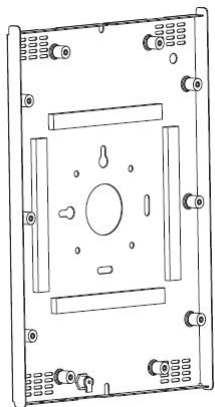


OU



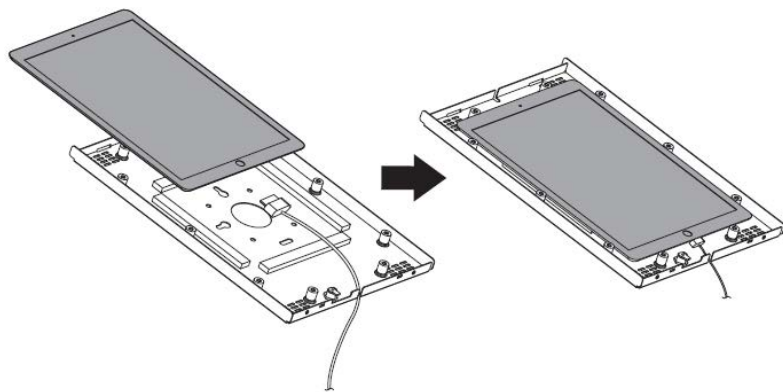
Fissare il retro del contenitore a parete o su staffe in funzione delle esigenze, usando le viti in dotazione.

3



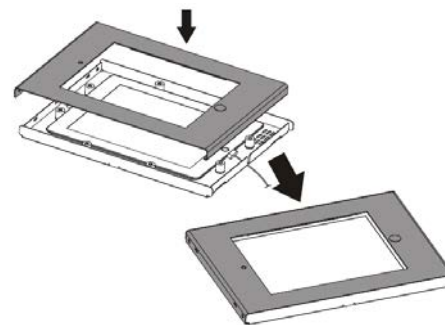
Verificare che i distanziatori siano nella posizione corretta per il tablet

4



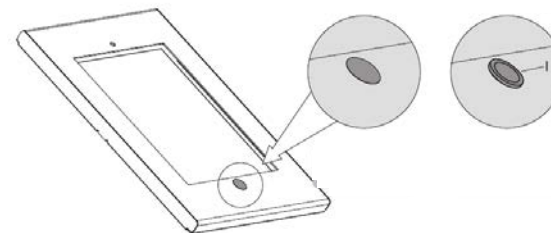
Far passare il cavo di alimentazione passando dal foro posteriore o lateralmente a seconda delle esigenze.

5



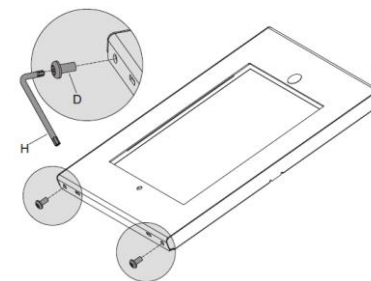
Riposizionare la parte superiore

6



Per chiudere l'accesso all'Home button inserire il finto tasto in dotazione

7



Infine inserire le 2 viti Torx con la chiave in dotazione per chiudere il contenitore.